



金光大道  
尚巒

YOHO : CO-TAI Mount Peak





發展商 Developers



[www.parrygroupmacau.com](http://www.parrygroupmacau.com) & [www.yohogroup.com](http://www.yohogroup.com)

項目地址：位於澳門路氹金光大道鄰近蝴蝶谷大馬路之土地 (SC1 地段)

Project Address: Terreno junto à Avenida de Vale das Borboletas (LOTE SC1)



矜城貴綠 定義精緻生活

*Love where you live, exquisite life redefined.*





金光大道  
尚巒  
YOHO : CO-TAI Mount Peak













CITY VIEW & ENVIRONMENT

HAVING BOTH PROSPERITY AND TRANQUILITY

繁華同恬靜

可以一同擁有





欣賞壯麗的景色, 面對迷人而繁華的“金光大道”, 同時背後綠色山巒將帶給心曠神怡的感覺。

Enjoy the refreshing Taipa Pequena Mountain, and the magnificent scenery facing the charming and prosperous "COTAI Strip".





## CONVENIENT TRANSPORTATION

# 便利交通 連接世界

金光大道·尚巒地理位置得天獨厚，傲據疊石塘山及毗鄰金光大道。交通網絡一應俱全，前往澳門國際機場、氹仔客運碼頭、橫琴蓮花口岸、拱北口岸，處處瞬間可達。全日二十四小時均有海陸空交通服務，經嶄新交通樞紐的港珠澳大橋，輕鬆實現『港珠澳一小時生活圈』。輕軌石排灣線及橫琴線兩項重點交通工程，澳門政府現已進行建造中。

YOHO: CO-TAI·MOUNT PEAK has a unique geographical location at the Alto de Coloane and adjacent to the extraordinary COTAI. Macau International Airport, Taipa Ferry Terminal, Hengqin Lotus Port, and Gongbei Port can easily be reached comfortably in an instant. Sea, land, and air transportation services are also available for 24hrs every day. The Hong Kong-Zhuhai-Macao Bridge, a new transportation hub, is a "One-hour drive" from Hong Kong-Zhuhai-Macao. The light rail of Seac Pai Van Line and Hengqin Line, two key transportation projects are currently under construction by the Macau government.







### 步行5分鐘 #5 mins walk

Seac Pai Van Lrt Station、Schools、  
Seac Pai Van Market Place、  
Medical Center、Social Facility  
石排灣輕軌站、學校、街市、社區、衛生中心



### 坐輕軌2站 #2 stops by LRT station

Lotus Checkpoint  
蓮花口岸



### 坐輕軌3站 #3 stops by LRT station

The Venetian Macau、  
Hengqin Extend Line (under Construction)  
威尼斯人、橫琴口岸延伸線(正在建設)



### 坐輕軌4站 #4 stops by LRT station

Galaxy Macau、City of Dreams、  
Wynn Palace、Taipa City (Pai Kok)  
銀河渡假村、新濠天地、永利皇宮、  
氹仔市區(排角)



### 坐輕軌5站 #5 stops by LRT station

YOHO: CO-TAI MARINA BAY、M.U.S.T.  
The University Hospital  
金光大道·鉅海灣、澳門科技大學、科大醫院



### 坐輕軌6站 #6 stops by LRT station

Macau International Airport、  
Jockey Club  
澳門國際機場、馬會



### 坐輕軌7站 #7 stops by LRT station

Taipa Ferry Terminal  
氹仔客運碼頭



LOCATION









P-DELUXE RESIDENCE

CENTRAL & COASTAL  
EXTRAORDINARY & PRESTIGIOUS

核心沿岸  
不凡顯赫

商舖

超高樓底

**Shops**

Elevated Ceilings

住宅

酒店式公寓設計

**Residential Units**

Serviced Apartments Design



PHANTOM HOTEL 旗下 P-DELUXE RESIDENCE

P-DELUXE RESIDENCE 住宅沿襲了 PHANTOM HOTEL 的卓越設計及精緻酒店服務內涵，時尚品味與多元生活巧妙地融合，每個細節都值得細意品嚐。在暢享舒適優質的個性化家居服務同時，還可盡享得天獨厚的地利之便，P-DELUXE RESIDENCE 為不一樣的您，營造時尚家居新體驗。

P-DELUXE RESIDENCE follows PHANTOM HOTEL's excellent design and delicate hotel service connotation. Exceptional fashion taste and diverse lifestyle are skillfully integrated for every detail is worth savoring. While enjoying comfortable, high quality and personalized home service, to be situated at a prime location also provides convenience. P-DELUXE RESIDENCE creates a new fashion home life experience for the unique you.



THEME HOTEL

BOUTIQUE HOTEL



精品酒店    Boutique Hotel  
型格設計    Stylish Design  
精緻體驗    Exquisite Experience





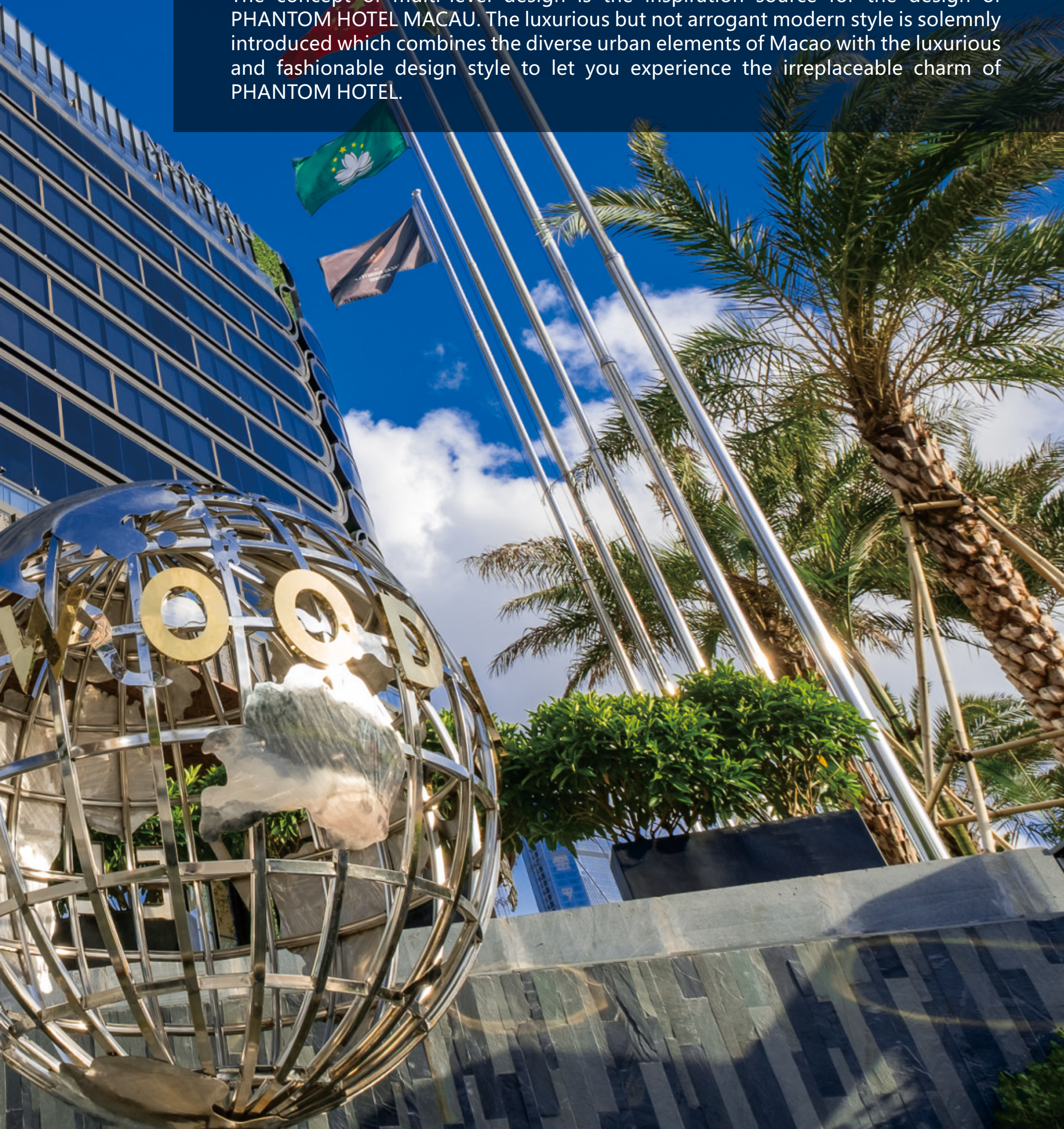


旅行酒店迷最愛朝聖的PHANTOM HOTEL，正式落戶澳門。時尚品味生活及精緻酒店服務享譽全球，設計細節營造出時尚氛圍，處處充滿驚喜，加上無微不至的個性化服務，記錄每次旅行的美好回憶。

「多層次設計」概念是 PHANTOM HOTEL MACAU 酒店的設計靈感來源，奢而不驕的摩登風格隆重登場，將澳門多元的城市元素，結合奢華時尚的設計風格，讓您體驗 PHANTOM HOTEL 無可取代的酒店魅力。

Travellers and hotel fans' favorite pilgrimage, PHANTOM HOTEL, officially settling in Macao, PHANTOM HOTEL holds a worldwide reputation for its fashionable taste of life and exquisite hotel services that the design details create a fashionable atmosphere, full of surprises, and meticulous personalized services to record the good memories of each trip.

The concept of multi-level design is the inspiration source for the design of PHANTOM HOTEL MACAU. The luxurious but not arrogant modern style is solemnly introduced which combines the diverse urban elements of Macao with the luxurious and fashionable design style to let you experience the irreplaceable charm of PHANTOM HOTEL.





HOTEL

THEME HOTEL

主題酒店









HOTEL

BOUTIQUE HOTEL

精品酒店









ARCHITECT & DESIGN

AESTHETIC LIFE  
THE REMARKABLE ARCHITECTURE AND DESIGN

美學人生

卓越不凡的建築及設計







線條及光影的完美配合，採用舒適耐看的材質。注重每一分的細節，力求融入美學的生活。

The lines and light, using comfortable and durable materials; to follow every detail, we strive to merge with the aesthetic life.





COMMUNITY

WELL-DEVELOPED COMMUNITY

完善社區配套







金光大道·尚巒傲據黃金地段，坐擁精彩配套設施，包括多國美食、酒店娛樂、高爾夫球場、超級市場、政府醫院等。此外，社區鄰近澳門學校校網，有澳門大學、澳門科技大學及多家中小幼稚園名校，讓子女盡得栽培。

Being located at a prime location, everything is at the reach of a hand. Enjoy a vast variety of surrounding facilities, including multinational gourmet food, hotel entertainment, supermarkets, Golf Course, Government Hospitals, etc. Education is also accessible with multiple universities, secondary, primary and kindergarten schools nearby.





COMMUNITY

LIFESTYLE, WORK, LEISURE  
ENJOY ALL IN ONE

生活、工作、休閒  
享樂於一體









COMMUNITY

PROMOTE A DAILY HEALTHY LIFESTYLE

健康生活  
每天開啟







鄰近跑步徑、單車徑、行山徑及高爾夫球場，環境翠綠休閒。  
Do exercise in the nearby running path, cycling track, hiking trail and golf course; enjoy the relaxing and eco-friendly environment.







根據澳門環境保護計劃 (2010-2020) ，停車場內配備電動車充電設施，推動綠色出行，為實現綠色城市出一分力。

To be in line with the Environmental Protection Planning of Macao (2010-2020), our carpark provides electric vehicle charger points and encourages the use of electric cars. Take a ride on the green side and make our city a cleaner place.





GREEN LIVING

LIVE A CLEANER & GREENER LIFESTYLE

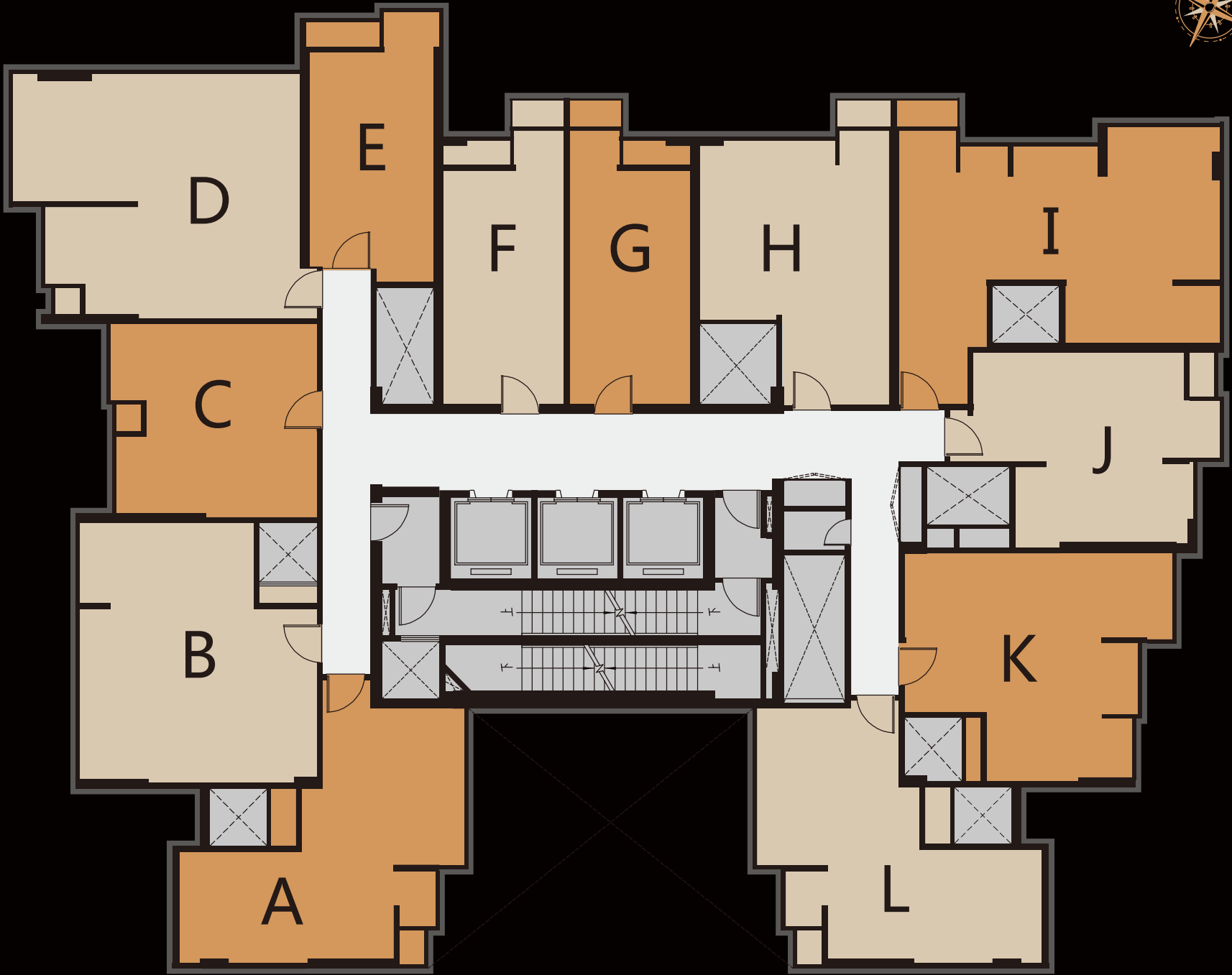
# 綠色新能源 實行低碳生活





FLOOR PLAN

平面圖 FLOOR PLAN



金光大道·尚巒優勢:

- 戶戶有露臺，飽覽金光大道，傲據澳門最大後花園；
- 樓層高度由3.2米至3.5米，超高實用率，贈送窗臺；
- 選用日立一拖一環保中央式設計冷暖空調，贈送燈槽等裝修；
- 免費提供全屋室內裝修及家電等生活配套(包括床上用品、窗簾、餐具用品)，已為您精心準備；
- 呈現別樹一幟的室內設計和裝修；
- 配置全高速電梯、室外恆溫泳池、室內健身房、兒童遊樂等設施；
- 提供自行車免費存放和租賃服務。





# 金光大道 尚巒

YOHO : CO-TAI Mount Peak



## Advantages of COTAI - Mount Peak

- Every household has a balcony with a panoramic view of the COTAI Strip, proudly occupying the largest backyard in Macau;
- The floor height ranges from 3.2 meters to 3.5 meters, with a high utilization rate, and bonus bay windows;
- Using Hitachi one-to-one environmentally system with heating and cooling functions, as well as minimalistic stylish designs;
- Providing free interior decoration and home appliances for the apartment complex (which include bedding, curtains, tableware);
- Presents unique interior design and decoration;
- Includes high-speed elevator, outdoor temperature-controlled swimming pool, indoor GYM room, children's playground and other facilities.
- Free bicycle storage and rental services are provided.



LOBBY



ELEVATED CEILING LUXURY LOBBY

超高豪華住宅大堂







PUBLIC SPACE



STYLISH PUBLIC SPACE

時尚的公共空間







## INTERIOR DESIGN



### UNIT F

### INTERIOR DESIGN REFERENCE RENDERING

## 家具佈置參考效果圖

物業圖則及呎數以當地政府最後批則為準；如有更改，恕不另行通知。  
The floor plans and the dimensions of this real estate are subject to the approval of the local government, and are subject to change without notice.









## UNIT I

### INTERIOR DESIGN REFERENCE RENDERING

# 家具佈置參考效果圖

物業圖則及呎數以當地政府最後批則為準；如有更改，恕不另行通知。  
The floor plans and the dimensions of this real estate are subject to the approval of the local government, and are subject to change without notice.









## UNIT J

### INTERIOR DESIGN REFERENCE RENDERING

# 家具佈置參考效果圖

物業圖則及呎數以當地政府最後批則為準；如有更改，恕不另行通知。  
The floor plans and the dimensions of this real estate are subject to the approval of the local government, and are subject to change without notice.







## INTERIOR DESIGN



### UNIT L

### INTERIOR DESIGN REFERENCE RENDERING

## 家具佈置參考效果圖

物業圖則及呎數以當地政府最後批則為準；如有更改，恕不另行通知。  
The floor plans and the dimensions of this real estate are subject to the approval of the local government, and are subject to change without notice.







## CLUBHOUSE



EXCLUSIVE CLUBHOUSE

型尚會所

閒暇別具品味





## PR CLUBHOUSE PR 會所設施

- 1 STYLISH GYM  
型格健身房
- 2 WARM-WATER OUTDOOR  
SWIMMING POOL  
戶外恆溫泳池
- 3 CAFÉ /  
MULTIPURPOSE AREA  
咖啡廳 / 多功能區
- 4 KIDS FUN LAND  
兒童天地
- 5 MAHJONG ROOM  
麻將室
- 6 PIANO ROOM  
鋼琴室
- 7 THEATRE  
影音室
- 8 BILLARD ROOM /  
PING PONG ROOM  
桌球室 / 乒乓球室



## CLUBHOUSE



STYLISH GYM 型格健身房



WARM-WATER OUTDOOR SWIMMING POOL 室外恆溫游泳池



CAFÉ/  
MULTIPURPOSE AREA      咖啡廳/  
多功能區



KIDS FUN LAND      兒童天地



## CLUBHOUSE



PIANO ROOM 鋼琴室

## MAHJONG ROOM 麻將室





BILLARD ROOM/  
PING PONG ROOM

桌球室/  
乒乓球室



THEATRE 影音室



FITTINGS & FINISHES

SMART HOME WITH  
PREMIUM BRANDS

智能家居  
卓越設備







健康及智能設備

| 位置<br>Location                                    | 設備<br>Appliance  | 品牌<br>Brand             | 基本戶型<br>Basic units |
|---|--|-------------------------|---------------------|
| 健康及智能設備<br>Health Care<br>and<br>Smart Appliances | 一拖一環保中央式設計冷暖空調<br>Central style design heating & cooling air conditioner | HITACHI 日立              | ✓                   |
|   | 電梯 Elevators   | 日本富士高速電梯                | ✓                   |
|   | 50寸 智能電視 50' Smart TV  | PIONEER                 | ✓                   |
|   | 智能門鎖 Smart Doorlock  | SIEMENS for P/R         | ✓                   |
|   | 可視對講 Video Intercom  | SMART LIVING<br>for P/R | ✓                   |
|   | 超高速洗衣乾衣機<br>HS Washing Machine with Dryer Function                       | BOSCH for P/R           | ✓                   |
|   | 燈掣開關 Lamp Switch (帶 LED)   | SIEMENS 睿智系列            | ✓                   |
|   | 分戶門鎖 Doorlock  | HAFELE                  | ✓                   |
|   | 小五金：合頁、門吸<br>Hardware: Hinges Door Suction                               | HAFELE                  | ✓                   |
|   | 智能家居 Smart Living  | SMART LIVING for P/R    | ✓                   |



FITTINGS & FINISHES



廚房  
KITCHEN



| 位置<br>Location | 設備<br>Appliance   | 品牌<br>Brand     | 基本戶型<br>Basic units |
|----------------|---|-----------------|---------------------|
| 廚房<br>Kitchen  | 櫥櫃 Kitchen Cabinet  | P/R             | ✓                   |
|                | 冰箱 Refrigerator   | P/R             | ✓                   |
|                | 抽油煙機 Range Hood   | 德國 TEKA for P/R | ✓                   |
|                | 燃氣爐 Gas Stove<br>(開放式廚房單位除外 Exclusive to Studio unit)                   | 德國 TEKA for P/R | ✓                   |
|                | 電磁爐 Induction Hob<br>(只提供予開放式廚房之單位 Studio unit Only)                    | 德國 TEKA for P/R | ✓                   |
|                | 嵌入式微波爐 Recessed Microwave   | 德國 TEKA for P/R | ✓                   |
|                | 燃氣熱水爐 Gas Water Heater<br>(開放式廚房單位除外 Exclusive to Studio unit)          | 日本林內            | ✓                   |
|                | 100L 電熱水爐 100L Electric Water Heater<br>(只提供予開放式廚房之單位 Studio unit Only) | P/R             | ✓                   |
|                | 廚餘垃圾處理器 Food Waste Disposer   | P/R             | ✓                   |





| 位置<br>Location | 設備<br>Appliance                   | 品牌<br>Brand  | 基本戶型<br>Basic units |
|----------------|-----------------------------------|--------------|---------------------|
| 浴室<br>Bathroom | 洗臉盆 Wash Basin                    | P/R          | ✓                   |
|                | 電子智能坐廁<br>Electronic Smart Toilet | P/R and TOTO | ✓                   |
|                | 成品淋浴房 Shower Room                 | P/R          | ✓                   |
|                | 面盆水龍頭 Basin Faucet                | P/R          | ✓                   |
|                | 淋浴花灑 Shower Mixer                 | P/R          | ✓                   |
|                | 廁紙座 Toilet Roll Holder            | P/R          | ✓                   |
|                | 吊頂式浴室寶 Bathroom Heater            | KOHLER       | ✓                   |



浴室

BATHROOM



TOTO Rinnai Pioneer

KOHLER HITACHI FUJI Japan SIEMENS Smart Living™

BOSCH H'AFELE TEKA



MANAGEMENT

TOP-NOTCH MANAGEMENT

# 專業服務 安心周到



Established in 1855  
於1855年成立

## 第一太平戴維斯物業管理(澳門)有限公司 Savills Property Management (Macau) Limited

第一太平戴維斯是全球領先的國際物業顧問和房地產代理之一，於倫敦證券交易所上市。公司於1855年成立，歷史悠久，信譽超卓，分支機構遍佈亞洲、澳大利亞、歐洲、北美洲、中東和非洲。全球員工逾39,000名。我們擁有獨一無二的行業知識與經營之道，為客戶提供全球最頂級的房地產服務。

第一太平戴維斯澳門辦事處於2005年成立，為本地的客戶提供全面及專業的服務，包括投資、租賃、估價及專業服務、物業管理及資產管理等等。

物業管理方面，第一太平戴維斯為全澳門最具規模的國際級物業管理公司，在澳門管理逾1,100萬平方尺之物業，包括高尚住宅及商業中心。我們藉具創意及增值潛力的方案，以最低成本為客戶提供最優質的管理服務。





Established in 1855 and listed on the London Stock Exchange, Savills is the leading global real estate adviser. The Company has over 39, 000 employees worldwide with offices and associates throughout Asia, Australia, Europe, North America, the Middle East and Africa. We provide clients the best real estate services through our unique industry knowledge and management philosophy.

Savills Macau was established in 2005 offering local clients comprehensive and professional services including investment, leasing, valuation and professional services, property management, asset management and etc.

With respect to Property Management, Savills is the largest international property management company in Macau. Savills manage over 11 million sq ft. of prime residential and commercial properties in the territory. Through our innovative and value enhancing solutions, we provide high standard of management services to our clients while maintaining the lowest economic cost.



## PROFESSIONAL DESIGN TEAM

# 專業設計團隊

### 建築設計 結構設計

Architectural design   Structural design



GET國際建築工程策劃顧問有限公司。主要業務範圍包括城市規劃、建築工程設計、工程監督管理及其顧問工作。

至今參與項目超過數百個，當中不乏如天晉、凱旋門酒店、英皇酒店等代表性項目。

GET International Construction Engineering Planning Consultant Co. Ltd. main business scope includes urban planning, architectural and engineering design, engineering supervision, construction management and project consultancy.

We have been involved so far more than hundreds of projects, some representative projects e.g. Yoho Twins in Taipa, L'Arc Hotel Macau and also Grand Emperor Hotel Macau.

### 莫海洲 Mok Hoi Chao

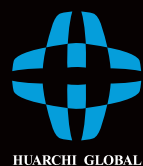
澳門資深建築師，至今主理之項目超過200個，當中不乏世紀豪庭、天晉、英皇酒店等項目，與發展商合作無間。

Senior architect in Macau with more than 200 projects have been managed so far, such as Millennium Court in Macau, Yoho Twins in Taipa and Grand Emperor Hotel Macau, etc., working perfect teamwork with developers.



## 外立面設計 室內設計 宣傳品設計

Facade design Interior design Publicity design



### 華記環球設計股份有限公司

HUARCHI GLOBAL DESIGN CORPORATION LIMITED

SEHK Stock Code 港交所股票代號 02296.HK

2019年11月21日，華記環球集團於香港交易所主板成功上市（股票代號02296.HK）。

華記環球設計股份有限公司（以下簡稱“華記環球”）成立於2003年，於中國澳門特別行政區。秉承著“以進取創新為堅牆，以企業進步為穹頂”的核心企業精神，華記環球鑄就了一支近百人的精英團隊，其中包含資深設計師、澳門註冊建築師、日本註冊商業規劃師、臺灣商業設計師、高級工程師、土木工程師、機電工程師、技術專家、優秀專案經理、企業管理專家等，該團隊匯集兩岸三地精英的智慧，其創新、卓越的設計水准詮釋著現代建築理念，同時，質高品優的工程項目也詮釋著實用價值和審美價值。



陳 量  
Thomson Chan

立面建築設計  
執行董事/澳門註冊建築師



劉 凡  
Mason Liu

樣板房室內設計  
高級合夥人/室內設計師



馮景文  
Jono Feng

會所室內設計  
高級合夥人/室內設計師



羅光合  
Roger Luo

公共區域室內設計  
高級合夥人/室內設計師



PROFESSIONAL TEAM

發展商：



YOHO GROUP

整體建築設計及  
建築及結構顧問：



國際建築工程策劃顧問有限公司  
INTERNACIONAL CONSULTORES DE ARQUITECTURA, ENGENHARIA E PLANEAMENTO LIMITADA

建築立面設計、  
室內設計及品牌設計：



華記環球設計股份有限公司  
HUARCHI GLOBAL DESIGN CORPORATION LIMITED

機電顧問：



國際建築工程策劃顧問有限公司  
INTERNACIONAL CONSULTORES DE ARQUITECTURA, ENGENHARIA E PLANEAMENTO LIMITADA

註冊建築師：Mok Hoi Chao

註冊土木工程師：Thomas lam

註冊機電工程師：Kuong Hao Sam

室內設計顧問：Huarchi Global Design Corporation Limited - Jono Feng, Mason Liu, Roger Luo

外牆設計顧問：Huarchi Global Design Corporation Limited- Thomson Chan , Honry Yang

總承建商：In Rich Construction Company Limited

建築監理和顧問：大志建築有限公司

法律顧問：艾林芝黃志剛律師事務所AI & WONG LAWYERS



地址:位於路氹金光大道鄰近蝴蝶谷大馬路之土地(SC1地段)

項目名稱: 金光大道•尚巒, YOHO: CO-TAI Mount Peak

物業標示編號: 23291

工程准照編號: 863/2019

土地性質: 租賃批地

樓高: 海拔72.45米 (地面以上17層)

住宅樓: 1座

地面商舖數目: 13個

住宅單位數目: 178個

私家車泊車位: 38個

電單車泊車位: 10個

會所面積: 441.95平方米

預計交樓日期: 2022年第四季度入伙 (以澳門工務局最後審批為準)

預售證編號: 09/2021(由澳門工務局於2021年6月9日發出)

物業管理服務公司: 第一太平戴維斯物業管理(澳門)有限公司

租賃期: 租賃批地期限至2035年9月8日, 確定性批給每十年自動續期

業權人: 威馬發展置業有限公司

項目發展商: PARRY GROUP & YOHO GROUP

銷售資料: [www.parrygroupmacau.com](http://www.parrygroupmacau.com) & [www.yohogroup.com](http://www.yohogroup.com)

Remark: Above figures will be revised based on the Occupation Permit and Final MDFA

附註: 以上數據需根據使用准照及最終之分層登記作出更改



# 發展商免責聲明

本售樓書內的所有資料，包括任何圖片、插圖、透視圖、模型、設計圖、繪圖、文字描述或其他資料，僅供參考或識別之用，並不構成任何明示或隱含要約、承諾、要約邀請或保證。部份設計圖經簡化及曾以電腦加工或修飾。部份圖片曾以電腦加工或修飾。部份畫家筆下之圖片經電腦加工或修飾，並非取自實景。所有內容，一律根據買賣合約所訂的版本為準。

賣方及發展商保留任何有關樓宇的設計、規格、平面圖、時間表、上蓋物業之分佈、物料，以及任何有關設備或服務之提供或其用途的取消或更改之最終改動及撤銷權，事前將不會另行通知。

本售樓書內之所有內容，均以政府最後審批或接受之記錄圖則及法律文件為準。某些計劃中的設施及服務，可能需要獲得政府批准或發牌方可提供。

圖則上所有室內及戶外之間隔、裝飾、設計、色系、擺設及設備僅供參考，並以入伙時所提供為準。







All information contained in this sales brochure, including but not limited to all photographs, drawings, perspectives, models, plans, graphics and descriptions, is for reference or identification only and shall not constitute or be construed as any offer, representation, offer invitation, or warranty whether expressly or impliedly. Some of the plans are simplified version and have been enhanced by computer graphics. Some of the artist' s impression has been enhanced by computer graphics and is not taken from the development. All information shall be subject to the Agreement for Sale and Purchase.

The Vendor and the Developer reserve the right to cancel or make modifications and changes to the building design, specifications, features, floor plans, timetable, layout, materials and the availability or intended use of all facilities or services without prior notice.

All information given in this sales brochure is subject to final government approved plans and legal documents.

Certain planned facilities and services may be subject to governmental consents or licences.

All layouts, interior and exterior design, colour scheme, fittings and finishes of the plans are subject to final adjustment upon completion and are shown for reference purposes only.